



Centrales Villageoises

Local citizen-owned energy communities

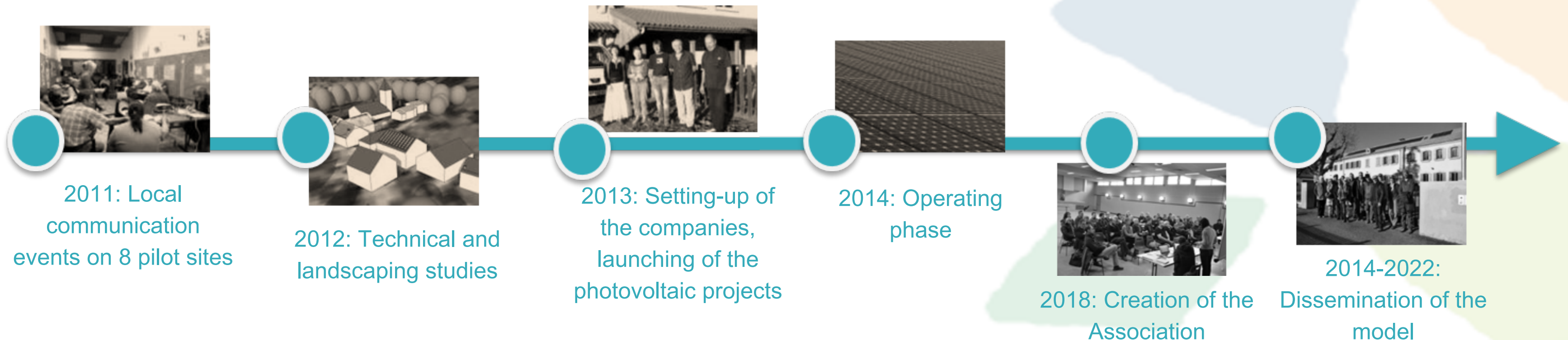
January 2024



Centrales Villageoises: an historic pionnier

Concept: Local companies bringing together citizens, local authorities, and businesses to jointly undertake energy transition projects through a territorial approach.

- Experiment launched in 2012 by AURA-EE and 5 Regional Nature Parks across 8 territories
- Setting up of a program via European and regional funding
- Model consolidated and disseminated since 2014



Values of the Association (Chart)

➡ Territorial approach

- Citizen governance
- Close link to municipalities and local planning
- Local shared benefits
- Consideration of non energetic stakes (landscape, social ties, etc.)

➡ Shared approach

- Sharing of tools and services, step-by-step technical support
- Partnerships at the network level

➡ Quality process

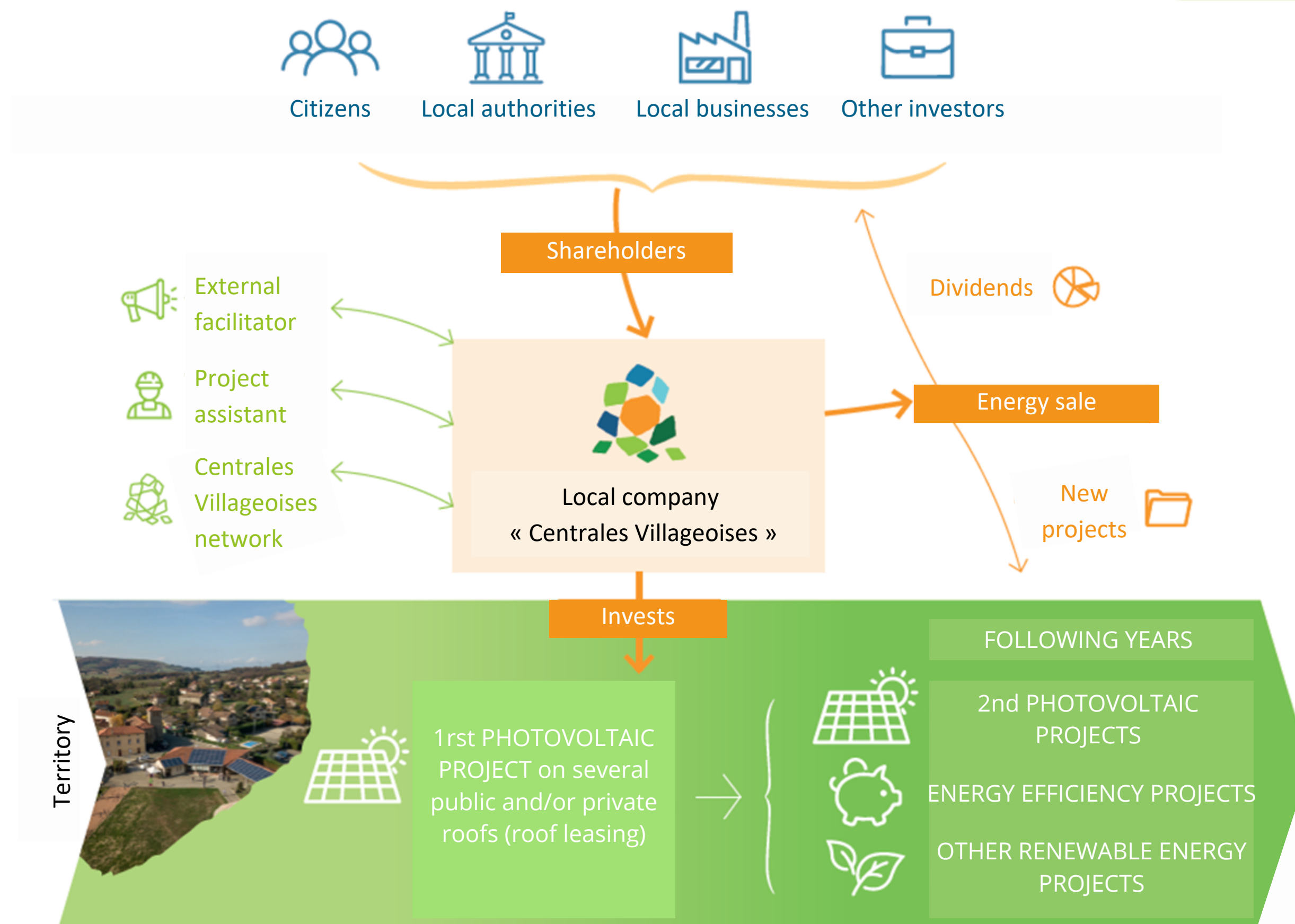
- Capitalization of experience
- Professionalization
- Innovation

➡ Solidarity approach

- Mutual assistance between local companies
- Decentralized networking

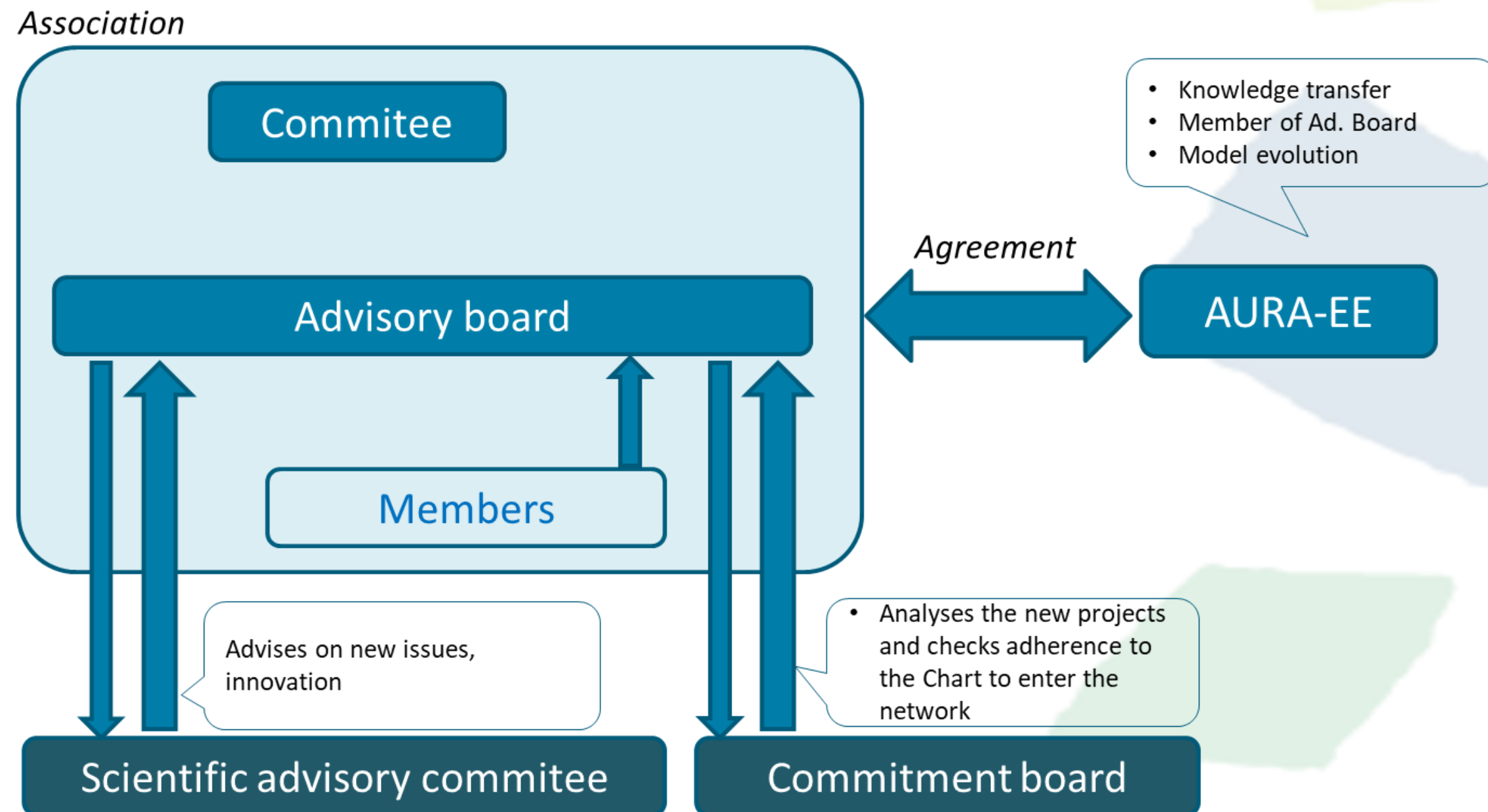


The model of Centrales Villageoises



A network organized around an association

- National association created in March 2018 to promote the Centrales Villageoises model, raise awareness, and facilitate its development.
- Project leaders (Centrales Villageoises) make up the majority within the association and its board of directors.
- Currently funded by: Members, Regions, Foundations, and Partners.



The association in numbers (january 2024)



68 territories
involved in
8 regions



+ de 7000
shareholders



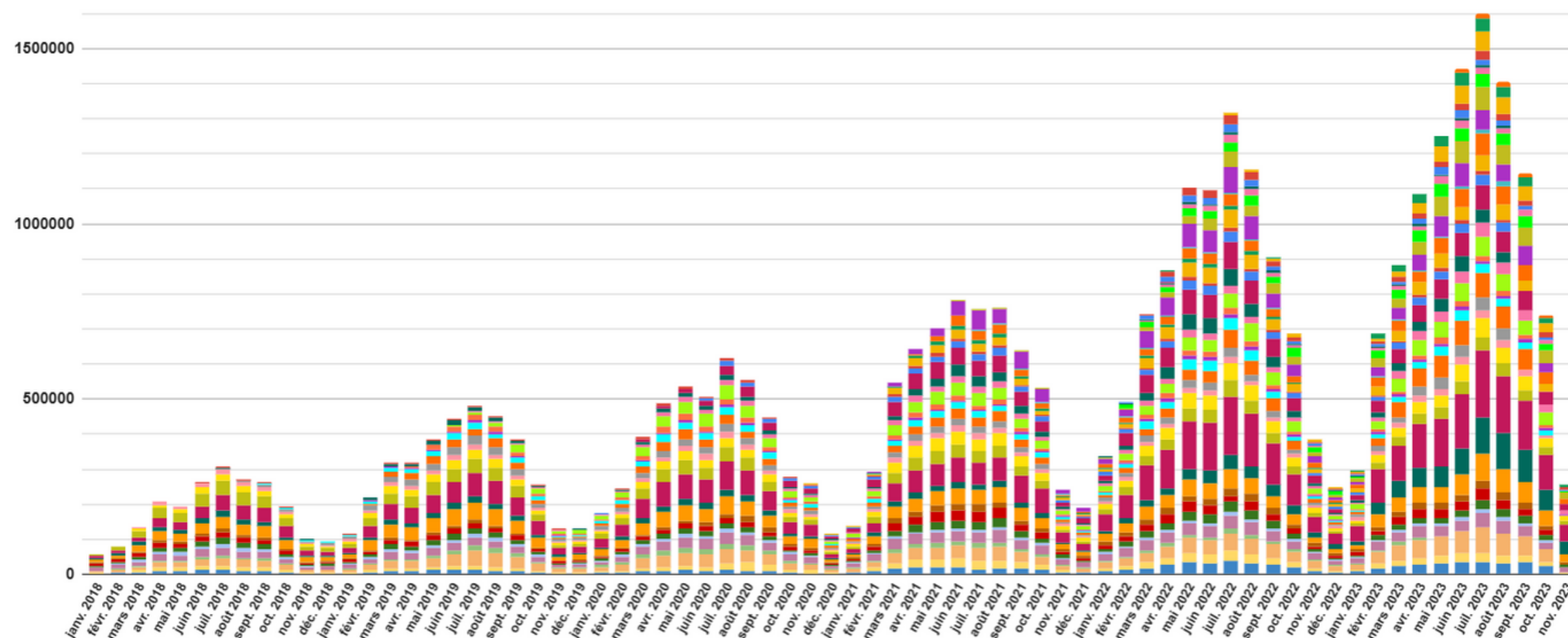
475 photovoltaic
installations in
operation



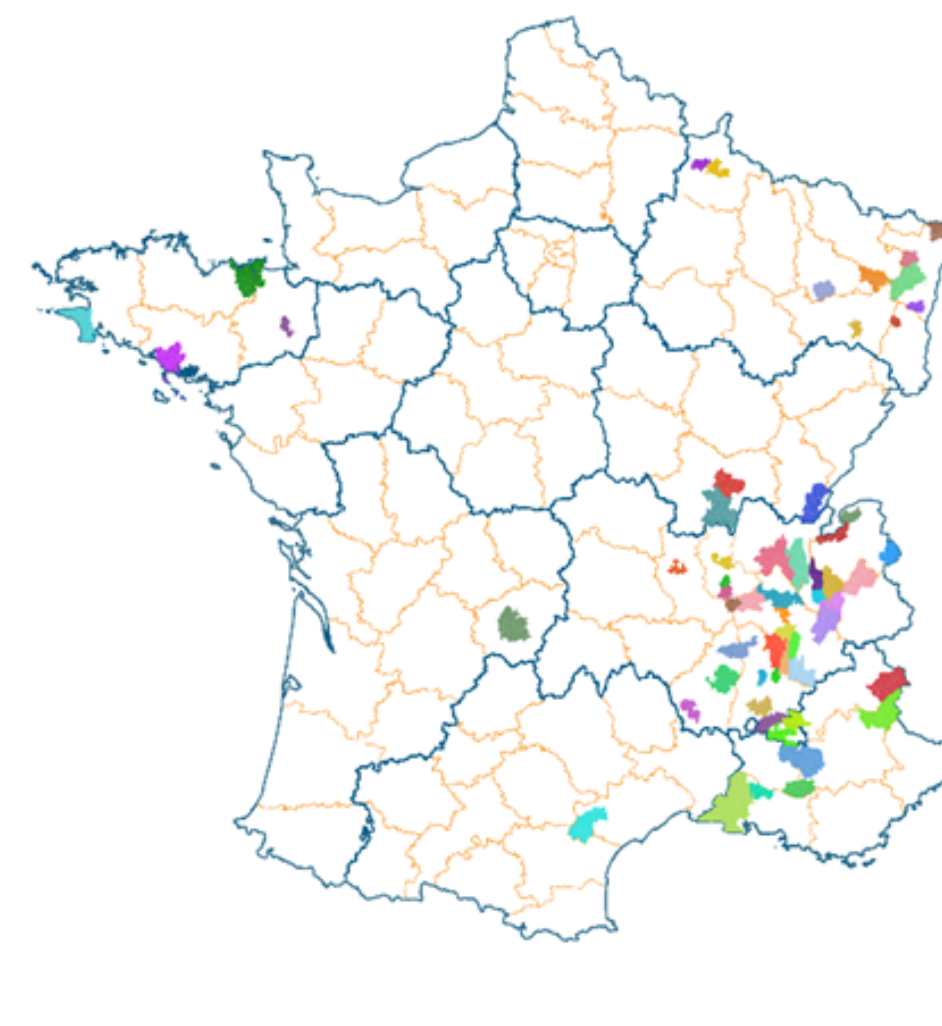
10 MWp installed
capacity



+ de 15 M€
invested



Cumulative photovoltaic energy production of Centrales Villageoises (in kWh)



**Geographic distribution of the
Centrales Villageoises**

december 2023

Photovoltaic installations



Steering committees



Inaugurations



Trainings



Shared tools and services

Step-by-step tools



Turnkey website + personalized email address
for each collective



Hotline
for project leaders



More than **100 documents**
to support project leaders



Review of the local companies status
by a Commitment board



Annual Steering Committee
(meeting of all Centrales Villageoises and their partners)



Webinars
and working groups on new thematic



Mentoring between Centrales Villageoises



Forum chat
to cross experiences



Shared video conferencing tool



Trainings with experts
on financial aspects, building structure analysis, etc.



Shared storage tool



Monthly newsletter
mentioning new projects, new regulations, new tools, events, etc.

Services



Agreement with DSO for grid connexion



Project support for Collective Self-Consumption



Bank and insurance partnerships



Expertise in cooperative companies

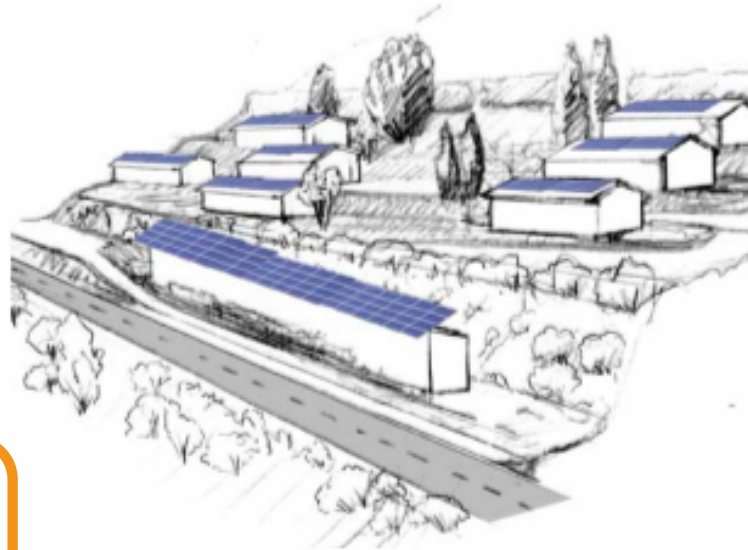


Accounting expertise firm

A cross-cutting approach

Projects rooted in the territory that connect with other issues:

Landscape
integration



Educational
awareness



Social links



Involvement of
local businesses



Shared rural
mobility



The network's development axes



Scaling up

- Strengthening the existing network: geographical expansion of the model
- Larger-scale projects

Diversifying

- Projects involving other Renewable Energies (hydropower, biomass, etc.)
- Other projects (Energy Management, mobility, etc.)

Professionalizing

- Consideration of shared employment between local companies

Pooling Resources

- Reinforcing pooling initiatives within the network

Innovating

- Innovative experiments based on local dynamics
- Evolution of the model (self-consumption projects)

Contact us : association@centralesvillageoises.fr



With the support of:



anticiper • économiser • valoriser

Financé par :



RÉPUBLIQUE
FRANÇAISE



ADEME
AGENCE DE LA
TRANSITION
ÉCOLOGIQUE



La Région
Grand Est



Auvergne
Rhône-Alpes

Énergie Environnement



Interreg



Cofinancé par
l'Union Européenne
Cofinanziato
dall'Unione Europea

France – Italia ALCOTRA



La Région
Auvergne-Rhône-Alpes



Life



1%
FOR THE
PLANET

— ASSOCIATION AGRÉÉE —



ÉNERGIE
PARTAGÉE



FONDATION
TERRE SOLIDAIRE

accélérateur des transitions
écologiques et solidaires





innovales

artisan des transitions



enedis

L'ÉLECTRICITÉ EN RESEAU



RÉGION
SUD



PROVENCE
ALPES
CÔTE D'AZUR



Fondation
Crédit Mutuel

Alliance Fédérale



Région
BRETAGNE